



GARLAND

**MWE2W
MWE2S**



Garland

/

McDonald's
GARLAND COMMERCIAL INDUSTRIES, LLC
185 EAST SOUTH STREET FREELAND, PENNSYLVANIA 18224
(800) 446-8367 (570) 636-1000 (570) 636-9874
clamshell@garland-group.com
<http://www.garland-group.com>

#4526903 (07/30/10)



.....	4	24	
.....	424	
.....	524	
.....	624	
.....	624	
.....	1025	
MWE2W MWG2W	1025	
MWE2S.....	1125	
.....	MWE2W	1225
.....	MWE2S	1225
.....	MWE2W ...	1225
.....	MWE2S	1226
.....	MWE2W	1226
CE	12	LONWORKS	26	
.....	MWE2S	12	26
CE	12	27
.....	13	27
.....	CE	13	28
.....	14	29
.....	1729
LonWorks	1730
Lonworks	17	33
.....	17	33
.....	18	34
.....	1934
.....	2034
.....	21	35
.....	21
.....	22
30 AMP	22
50 AMP	22
.....	22
.....	22
.....	23
.....	23

McDonald's

Garland
McDonald's

a)

b)

c)

d)

2

Garland Group

100

161

Garland Group

Garland Group

/

Garland Group



Garland

120C (250F)

McDonald's

**(HCS) -
(HCS)**

START

(MSDS)

(HCS)

-

-

-

-

SYSTEM SETUP

CANCEL

Garland

1.

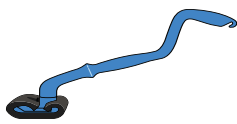
2.

3.

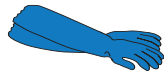
15



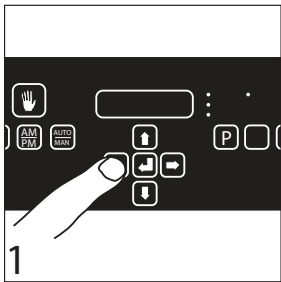
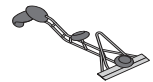
McD®



Kay®

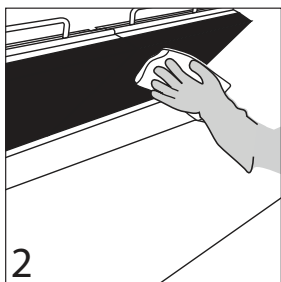
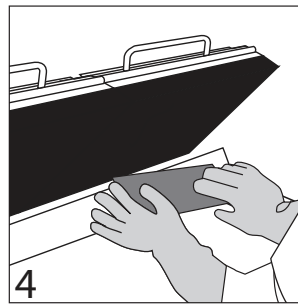


Kay®

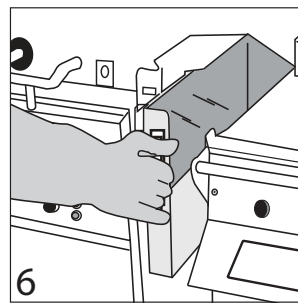
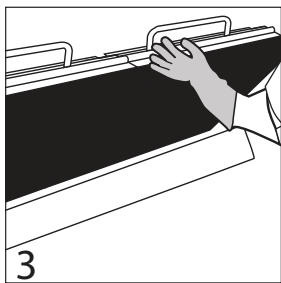
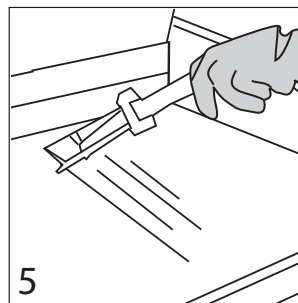


• Clean Mode
Clean

Mode OFF
OFF

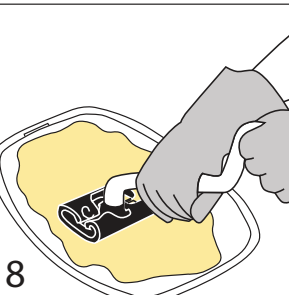
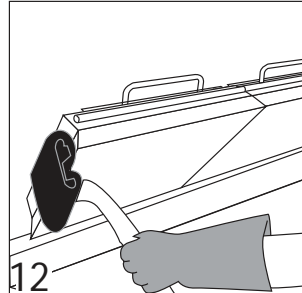


• Material®
Release

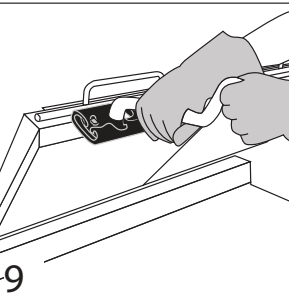
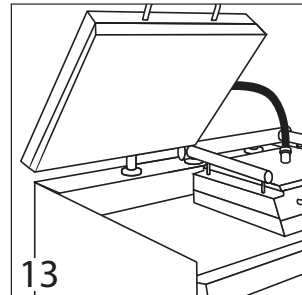




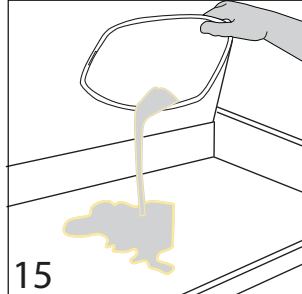
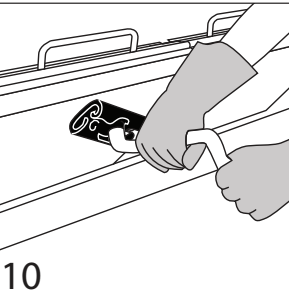
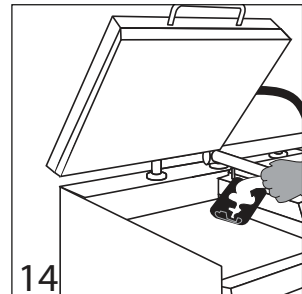
McD®



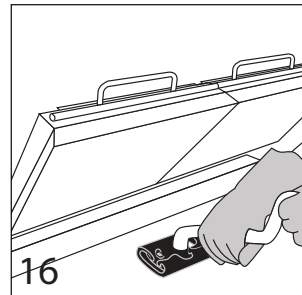
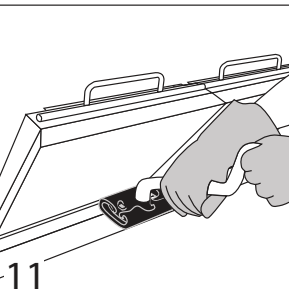
KAY

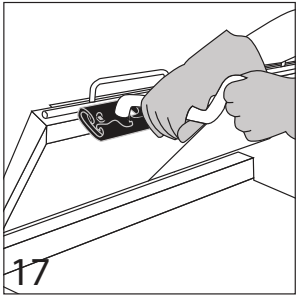


McD®

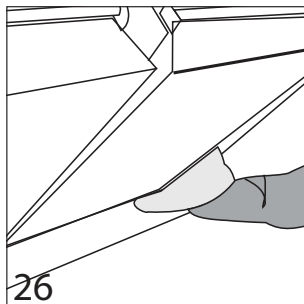
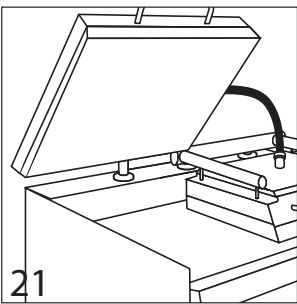
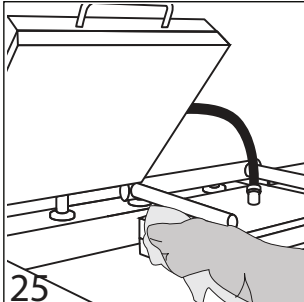
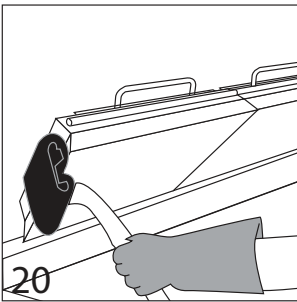
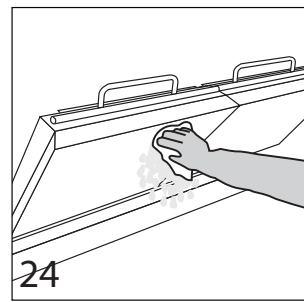
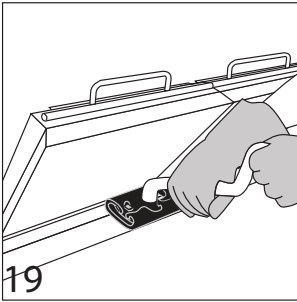
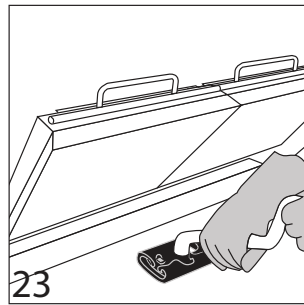
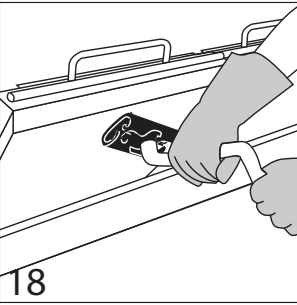
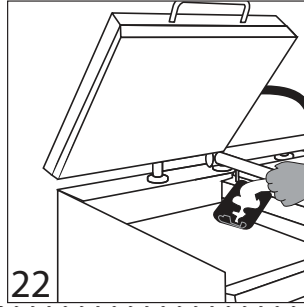


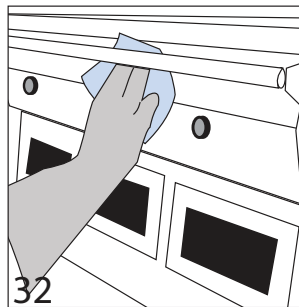
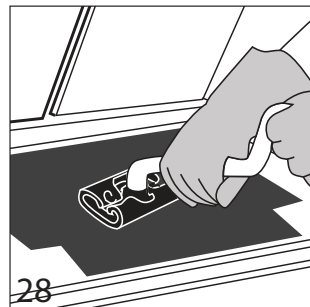
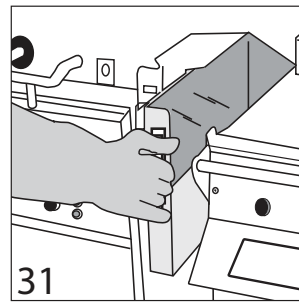
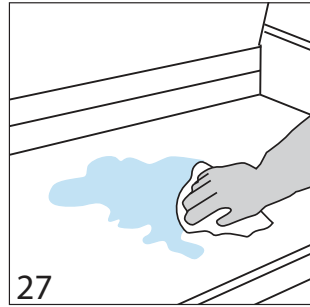
McD®



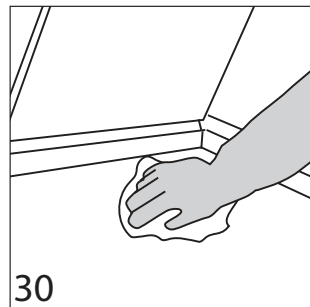
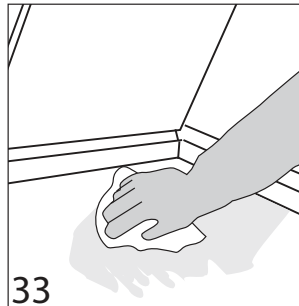
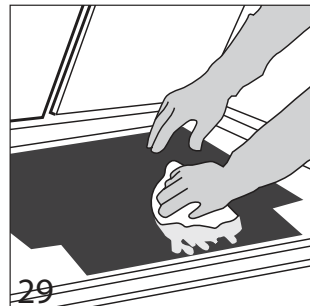


KAY

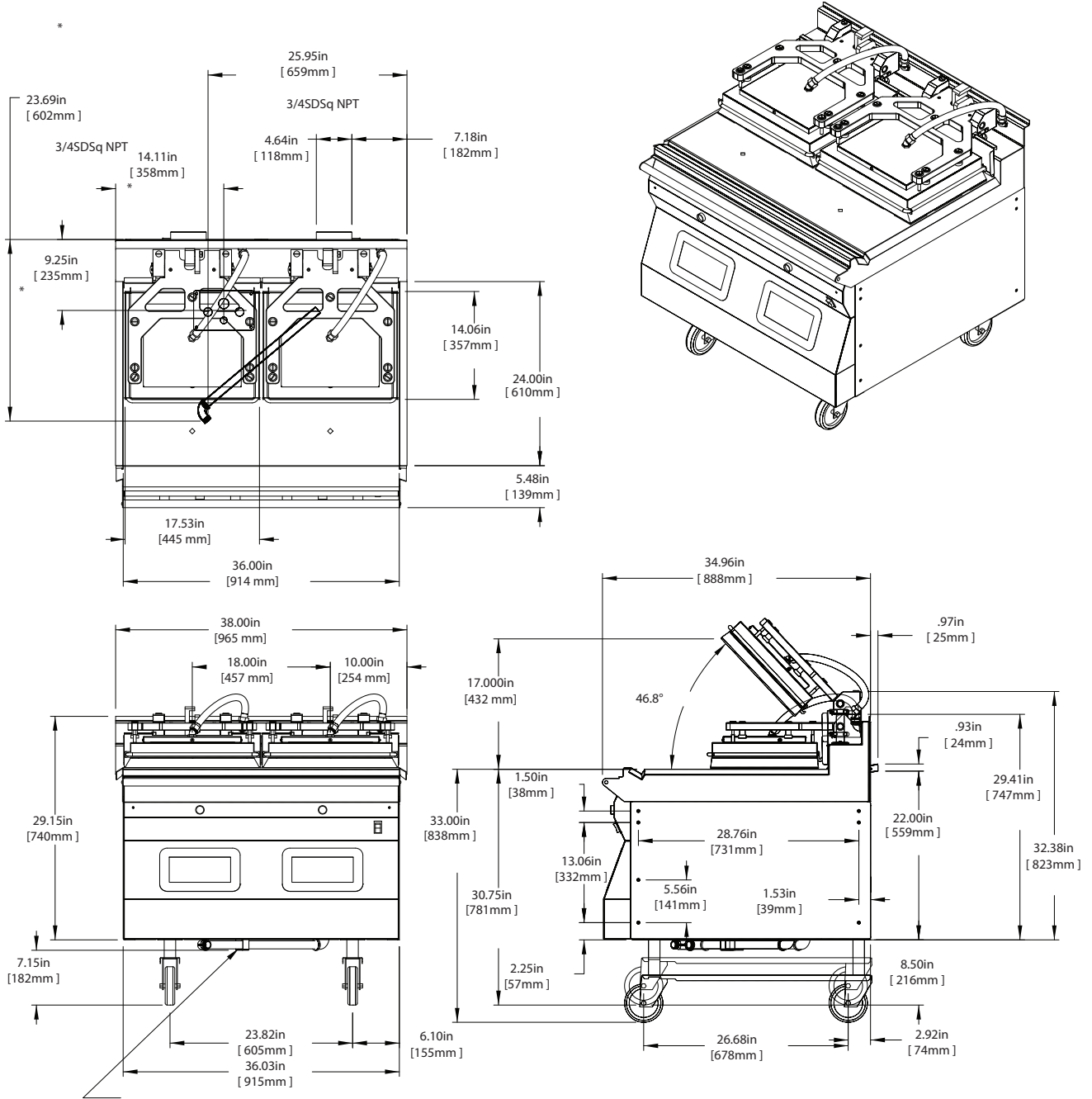




KAY



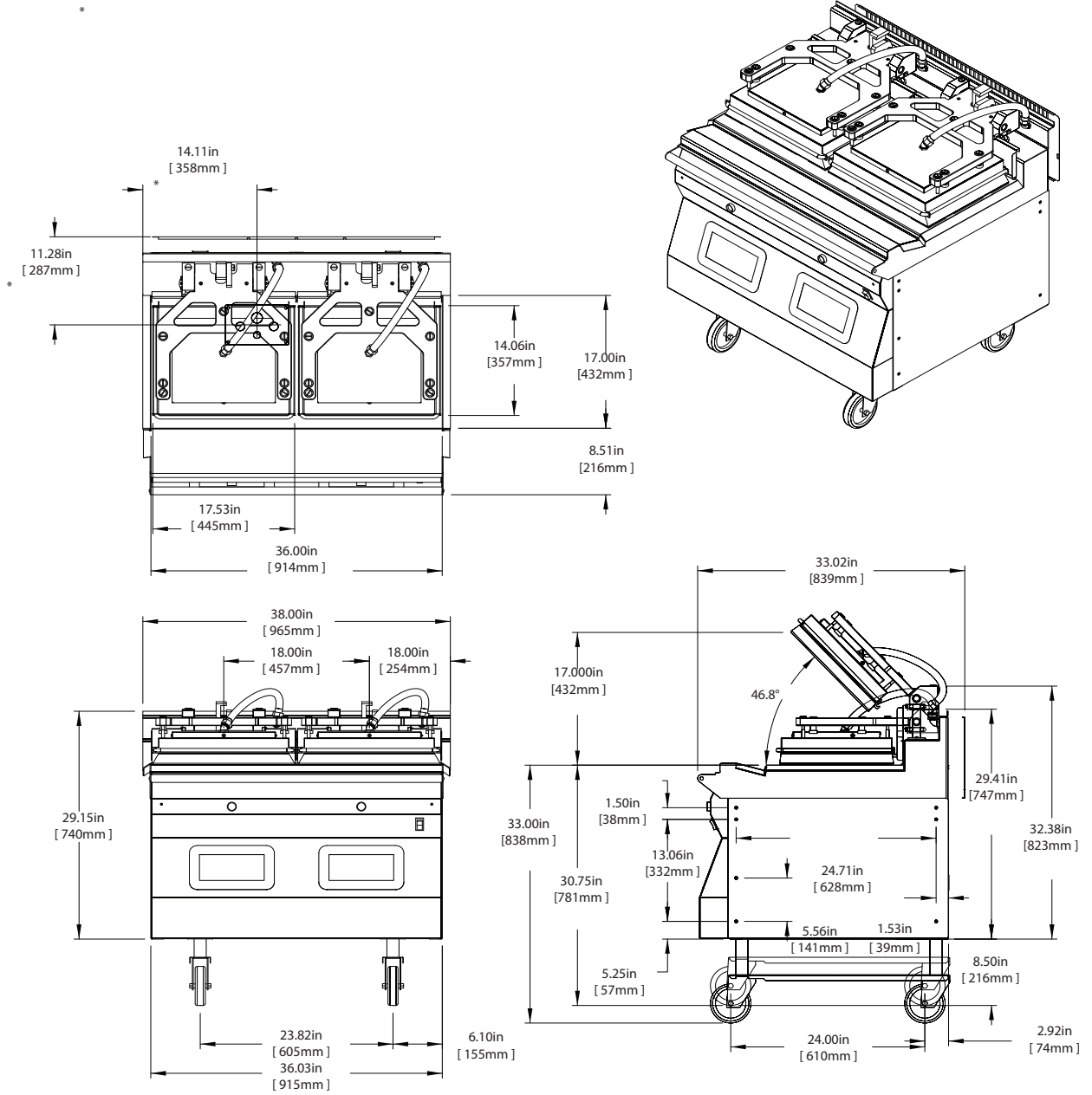
MWE2W MWG2W



	*					
		mm		mm		mm
MWE2W	29.2	740	36.0	915	34.9	887

*

MWE2S



	*					
		mm		mm		mm
MWE2S	29.2	740	36.0	915	32.6	828

*

MWE2W

	(KW)	AMP								
		208V			220V			240V		
		L1	L2	L3	L1	L2	L3	L1	L2	L3
1	10.6	29.5	29.5	29.5	27.9	27.9	27.9	25.5	25.5	25.5
2	10.6	29.5	29.5	29.5	27.9	27.9	27.9	25.5	25.5	25.5

MWE2S

	(KW)	AMP								
		208V			220V			240V		
		L1	L2	L3	L1	L2	L3	L1	L2	L3
1	8.1	24.2	24.2	24.2	22.9	22.9	22.9	21	21	21
2	8.1	24.2	24.2	24.2	22.9	22.9	22.9	21	21	21

MWE2W

	(KW)	AMP					
		208V			240V		
		L1	L2	L3	L1	L2	L3
	21.2	59	59	59	51	51	51

MWE2S

	(KW)	AMP					
		208V			240V		
		L1	L2	L3	L1	L2	L3
	16.2	48.4	38.2	48.4	42	33.2	42

MWE2W CE

	(KW)			AMP									NNEKES
	380V	400V	415V	380V			400V			415V			
				L1	L2	L3	L1	L2	L3	L1	L2	L3	
	21.2	20.0	21.2	32.0	32.0	32.0	28.9	28.9	28.9	29.4	29.4	29.4	748

MWE2S CE

	(KW)	AMP									NNEKES
		380V			400V			415V			
		L1	L2	L3	L1	L2	L3	L1	L2	L3	
	16.2	28.0	20.1	20.1	27.1	19.8	19.8	26.0	19.0	19.0	748

	(kW)	AMP								
		208V/60Hz			220V/60Hz			240V/60Hz		
		L1	L2	L3	L1	L2	L3	L1	L2	L3
1	11.2kW	31.0	31.0	31.0	29.5	29.5	29.5	27.0	27.0	27.0

	(BTU/H)	(BTU/H)	(MM)		
	31,529	63,038	35	7.0	3.5

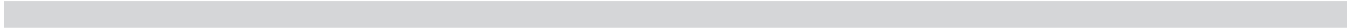
CE

	(kW)	kW/			AMP									NNEKES
		208V / 220V / 240V			208V / 60Hz			220V / 60Hz			240V / 60Hz			
		L1 / N	L2 / N	L3 / N	L1	L2	L3	L1	L2	L3	L1	L2	L3	
1	9.8kW	3.3	3.3	3.3	25.7	25.7	25.7	24.6	24.6	24.6	23.6	23.6	23.6	

	(kW)	(kW)	(mm)	(mbar)	(mbar)
G20 NG					
G25 NG					
G31 LPG					

G20	G25	G31

	(mbar)
I _{2H}	AT CH CZ DK ES FI GB IE IS IT NO PT SE
I _{2E}	DE LU
I _{2L}	NL
I _{2ER}	FR
I _{3P}	NL
I _{3P}	BE CH CZ ES FR GB GR IE LU
I _{3P}	BE CH DE CZ ES FR NL



- 1. (1)
- 2. (1)
- Garland 3. (1)
- a. (6)
- b. (8)
- c. (2)
- 4. (1) (4)

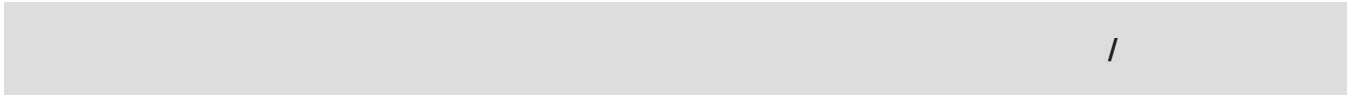
Garland Commercial Industries

KES

- 1. 1.
- 2. 2.
- 3. 3.
- 4. •
- 5. •
- 6. • KES
- 7. McDonald's

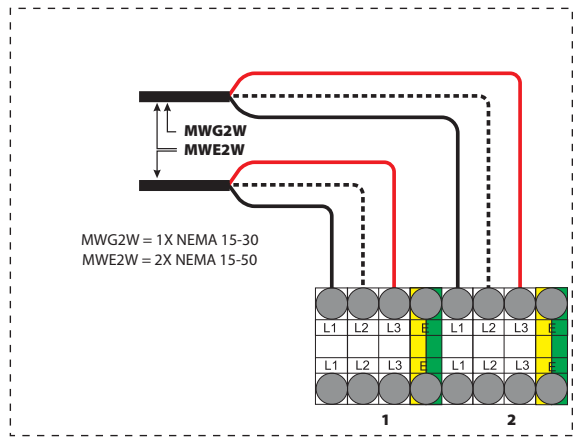
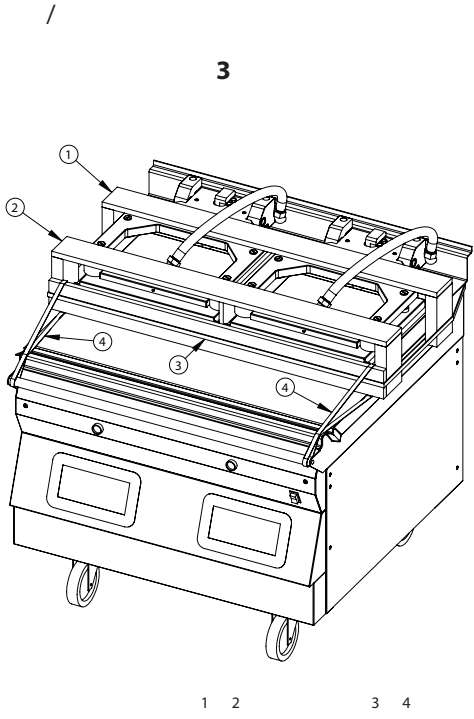
- 1.
- 2.
- 3.
- 4.
- 5.
- 6.
- 7. McDonald's

8.

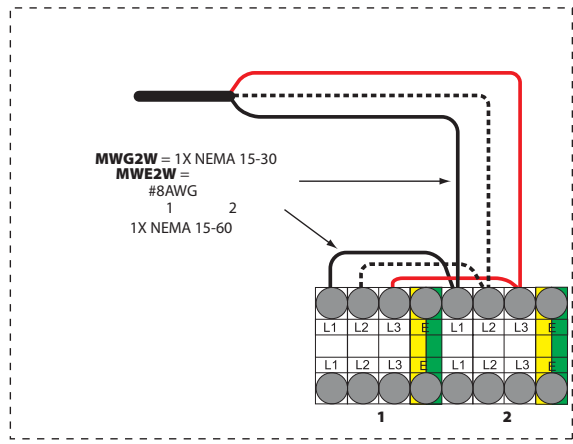


1.

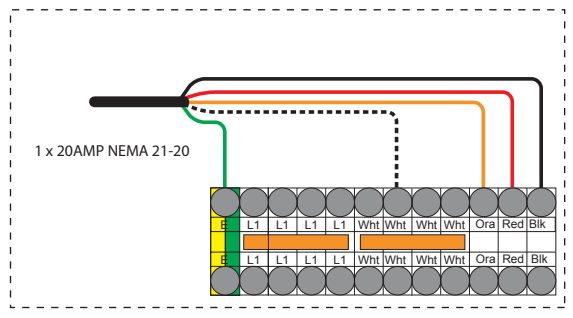
ANSI/NFPA



2.



3.



4.

