

CONTROL PROGRAMMING

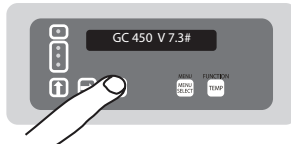
FOR USE WITH MODELS MWE-9501 / MWG-9501

The following procedures should be followed in sequence. If you have trouble following the steps listed below, you can consult your operations manual. A downloadable copy of the Operations manual containing additional programming instruction can be found at <https://clamshell.garland-group.com/literature.asp>.

- 1. Enter Programming** - Enter the program mode.
- 2. Disable Multi Gap Cooking** - Not used anymore.
- 3. Remove existing menu items from library** - Remove Folded Eggs & Round Eggs (FLAT) from library, these items will be reprogrammed as CLAM menu items.
- 4. Change settings for the remaining menu items in library** - Change existing menu items to the new programmed settings.
- 5. Program new menu items into library** - Reprogram Egg products into CLAM menu items.

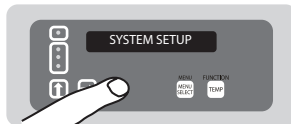
Enter Programming

1. PRESS and HOLD the **PROG** button for approximately 3-5 seconds. The controller will display the control model number and the current version Eprom Chip.



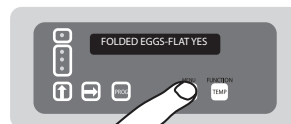
Disable Multi Gap Cooking

2. PRESS the **PROG** button 2x. The controller will display "SYSTEM SETUP".
3. PRESS the **MENU SELECT** button until the control displays "MULTI GAP (Yes/No)" - *If control displays "NO", move to step 6.*
4. PRESS and HOLD the **RIGHT** button until the "YES" begins to flash.
5. PRESS the **UP** button to change the MULTI GAP setting to "NO".
6. PRESS the **PROG** button 2x. The controller will display "MENU ITEMS".



Remove menu items from menu library

7. PRESS the **MENU SELECT** button until "FOLDED EGGS - FLAT - YES" appears in the display.



8. PRESS the **UP** button to change the "YES" to "NO".



9. PRESS the **MENU SELECT** button until "ROUND EGGS - FLAT - YES" appears in the display.

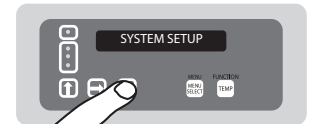


10. PRESS the **UP** button to change the "YES" to "NO".



Change settings for current menu items 10:1, 4:1, Sausage, Grilled Chicken, Bacon, Angus, Mushrooms & McRib.

11. PRESS the **PROG** button 2x. The controller will display "SYSTEM SETUP".



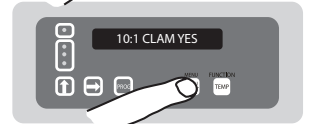
12. PRESS and HOLD the **UP** button until "GAP CALIBRATION" appears in the display.



13. PRESS the **PROG** button 2x. The controller will display "MENU ITEMS".



14. PRESS the **MENU SELECT** button to select "10:1 - CLAM YES".



15. PRESS the **TEMP** button until "REMOVE TIME - ###" is displayed.



16. Using the **UP** and **RIGHT** button, change the old setting to the new setting.



17. PRESS the **TEMP** button until "GAP SETTING - ###" is displayed.



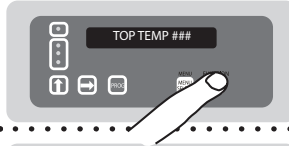
18. Using the **UP** and **RIGHT** button, change the old setting to the new setting.



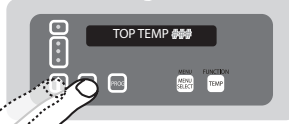
CONTROL PROGRAMMING

FOR USE WITH MODELS MWE-9501 / MWG-9501

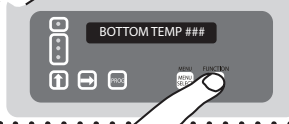
19. PRESS the **TEMP** button until "TOP TEMP - ###" is displayed.



20. Using the **↑** and **→** button, change the old setting to the new setting.



21. PRESS the **TEMP** button until "BOTTOM TEMP - ###" is displayed.



22. Using the **↑** and **→** button, change the old setting to the new setting.



23. Repeat steps 15 - 21 for product menu 4:1, Sausage, Bacon, Angus, Mushroom & McRib. Once complete, go to step 24.

IF you accidentally exit programming during this procedure, follow steps 1-2, then 12 through 22.

Add new menu items required (Round Eggs, Folded Eggs)

24. PRESS the **MENU SELECT** button to select "OPT MENU # - CLAM NO". DO NOT select a OPT MENU FLAT



25. PRESS the **↑** button to change the "NO" to "YES".



26. PRESS the **TEMP** button until "REMOVE TIME - ###" is displayed.



27. Using the **↑** and **→** button, change the old setting to the new setting.



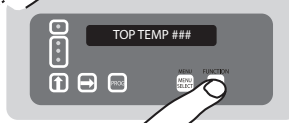
28. PRESS the **TEMP** button until "GAP SETTING - ###" is displayed.



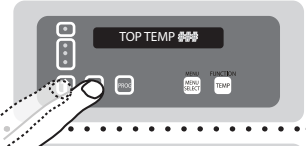
29. Using the **↑** and **→** button, change the old setting to the new setting.



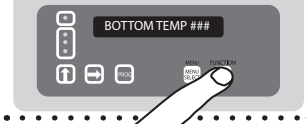
30. PRESS the **TEMP** button until "TOP TEMP - ###" is displayed.



31. Using the **↑** and **→** button, change the old setting to the new setting.



32. PRESS the **TEMP** button until "BOTTOM TEMP - ###" is displayed.



33. Using the **↑** and **→** button, change the old setting to the new setting.



34. PRESS the **TEMP** button until "OPT MENU # - CLAM" is displayed. The "O" in "OPT" will be flashing.



35. Using the **↑** and **→** button, change the "OPT MENU #" to "ROUND EGGS-CLAM"



36. Repeat procedure 24-35 for "FOLDED EGG-CLAM"



37. Exit programming mode. PRESS the **PROG** button and then the **→** button.

***** The following settings are the NEW settings. All previous settings should be changed to the following settings. *****

Breakfast Menu

Product	Set temp		Gap Setting	Start Remove Time
	Upper	Lower		
Sausage	425°F	375°F	.350	87
Roasted Bacon	425°F	375°F	.265	60 (Gas) 70 (Elec)
Bkfst Steak	425°F	375°F	.425	110
Round Eggs	300°F	285°F	.625	155
Folded Eggs	300°F	285°F	.625	120

Lunch Menu

10:1 Clam	425°F	375°F	.235	38
4:1 Clam	425°F	375°F	.425	118
Grilled Chicken	425°F	375°F		220 (Turn) 470 (Remove)
Angus	425°F	375°F	.534	176 (2 platen) 179 (3 platen)
Mushrooms	425°F	375°F	.425	104
McRib	425°F	375°F	.530	170