



# 3-Platen Gas Clamshell Grill



3-Platen Gas Clamshell Grill

Model: MWG3W



### Product Features:

- Three platen design provides an additional grilled product cook zone within the same space currently used within the restaurant.
- Product Recognition technology that automatically senses the food product placed on the grill yields faster, flexible operation and reduces waste.
- Auto-calibration of each platen for gapping precision, consistent product quality and expanded self diagnostics.
- LonWorks® technology to network the grill into the “kitchen of the future,” reducing energy consumption and increasing operational efficiency.
- No access of upper platen required for adjustments and simple motorized movement of upper platen minimizes components.
- Two year parts and labor warranty.

The Garland 3-Platen Clamshell grill, manufactured exclusively for McDonald’s, provides a method for efficient two-sided cooking, while accommodating a variety of products. This grill meets all of McDonald’s standards for safety, efficiency, and cleanliness.



The specifications on this sheet are for the exclusive use of licensees of the McDonald’s Corporation.

**Manufactured Exclusively for McDonald’s by:**  
**Garland Commercial Industries, LLC**  
**185 East South Street, Freeland, PA 18224**  
**Phone: (570) 636-1000 • Fax: (570) 636-3903**

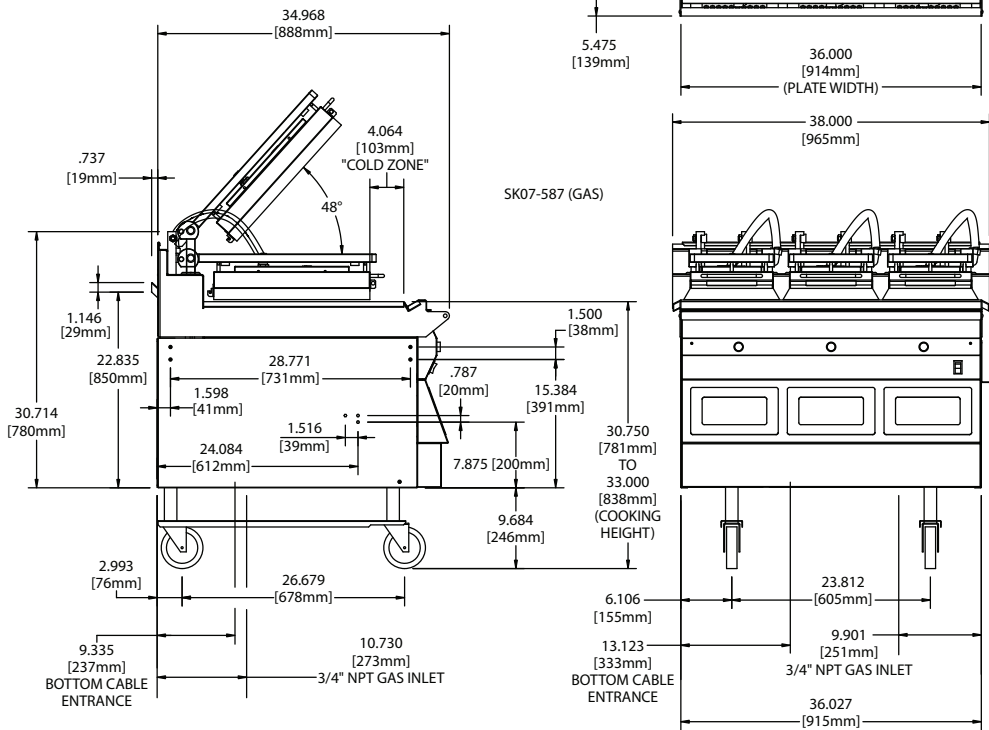




**Manufactured Exclusively for McDonald's by:**  
**Garland Commercial Industries, LLC**  
**185 East South Street, Freeland, PA 18224**  
**Phone: (570) 636-1000 • Fax: (570) 636-3903**

The specifications on this sheet are for the exclusive use of licensees of the McDonald's Corporation.

Enodis



3-Platen Gas Clamshell Grill

**ELECTRICAL INPUT**

3N~ 400V 50Hz	TOTAL kW LOAD	LOADING: (kW/PHASE)			NOMINAL AMPS PER LINE			MENNEKES PLUG REQUIRED
		L1/L2	L1/L3	L2/L3	L1	L2	L3	
	10.0	3.25	3.25	3.25	14.1	14.1	14.1	Type 748

**GAS INPUT**

GAS GROUP	MAX INPUT (NET) PER BURNER (kW)	TOTAL INPUT RATING (kW)	INJECTOR SIZE	AIR SHUTTER SETTING (mm)	SUPPLY PRESSURE (mbar)	BURNER PRESSURE (mbar)	VOLUMETRIC GAS RATE
G20 NG	8.9	26.7	2.79mm (#35)	4.8	20/25	8.7	0.940 m³/h
G25 NG			2.79mm (#35)	4.8	20	8.7	
G31 LPG	8.9	26.7	2.26mm (#43)	4.8	37/50	8.7	0.69 kg/h

**GAS CATEGORIES**

CATEGORY	DESTINATION COUNTRIES	SUPPLY PRESSURE
I <sub>2H</sub>	AT, CH, CZ, DK, ES, FI, GB, IE, IS, IT, NO, PT, SE	20.0 mbar
I <sub>2E</sub>	DE, LU	20.0 mbar
I <sub>2L</sub>	NL	25.0 mbar
I <sub>2ER</sub>	FR	20.0 / 25.0 mbar
I <sub>3P</sub>	NL	30.0 mbar
I <sub>3P</sub>	BE, CH, CZ, ES, FR, GB, GR, IE, LU	37.0 mbar
I <sub>3P</sub>	BE, CH, DE, CZ, ES, FR, NL	50.0 mbar

**NET HEATING VALUE BY GAS GROUP**

<b>G20</b>	34.02 MJ/m³; 0.555 SG
<b>G25</b>	29.25 MJ/m³; 0.613 SG
<b>G31</b>	88.0 MJ/m³ (46.34 MJ/kg); 1.55 SG