



3-Platen Slim Electric Clamshell Grill



3-Platen Slim Electric Clamshell Grill

Model: MWE3WS



Product Features:

- Three platen design provides an additional grilled product cook zone within the same space currently used within the restaurant.
- Two platen option available with a flat cook zone on either the left or right.
- Product Recognition technology that automatically senses the food product placed on the grill yields faster, flexible operation and reduces waste.
- Auto-calibration of each platen for gapping precision, consistent product quality and expanded self diagnostics.
- LonWorks® technology to network the grill into the “kitchen of the future,” reducing energy consumption and increasing operational efficiency.
- No access of upper platen required for adjustments and simple motorized movement of upper platen minimizes components.
- Two year parts and labor warranty.

The Garland 3-Platen Clamshell grill, manufactured exclusively for McDonald’s, provides a method for efficient two-sided cooking, while accommodating a variety of products. This grill meets all of McDonald’s standards for safety, efficiency, and cleanliness.



The specifications on this sheet are for the exclusive use of licensees of the McDonald’s Corporation.

Manufactured Exclusively for McDonald’s by:
Garland Commercial Industries, LLC
185 East South Street, Freeland, PA 18224
Phone: (570) 636-1000 • Fax: (570) 636-3903

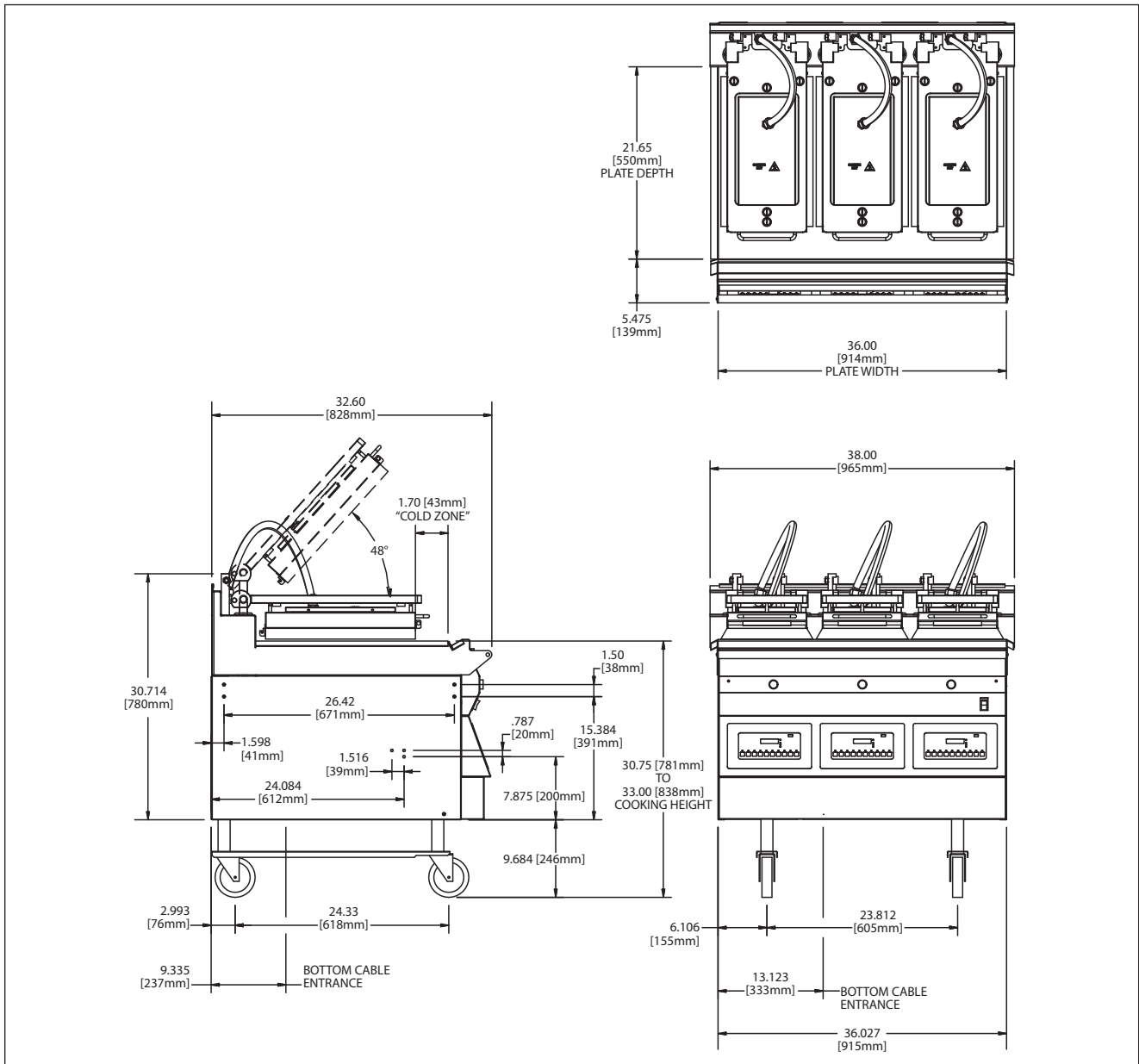




3-Platen Slim Electric Clamshell Grill



3-Platen Slim Electric Clamshell Grill



MODEL MWE3W-SLIM-CE		LOADING: (kW/PHASE)			NOMINAL AMPS PER LINE			MENNEKES PLUG REQUIRED
3N~ 400V 50Hz	TOTAL kW LOAD	230V / 400V			230V / 400V			
		L1/L2	L1/L3	L2/L3	L1	L2	L3	
	22.7	7.60	7.60	7.60	33.0	33.0	33.0	Type 748

The specifications on this sheet are for the exclusive use of licensees of the McDonald's Corporation.

Manufactured Exclusively for McDonald's by:
Garland Commercial Industries, LLC
185 East South Street, Freeland, PA 18224
Phone: (570) 636-1000 • Fax: (570) 636-3903

